



JASSTECH



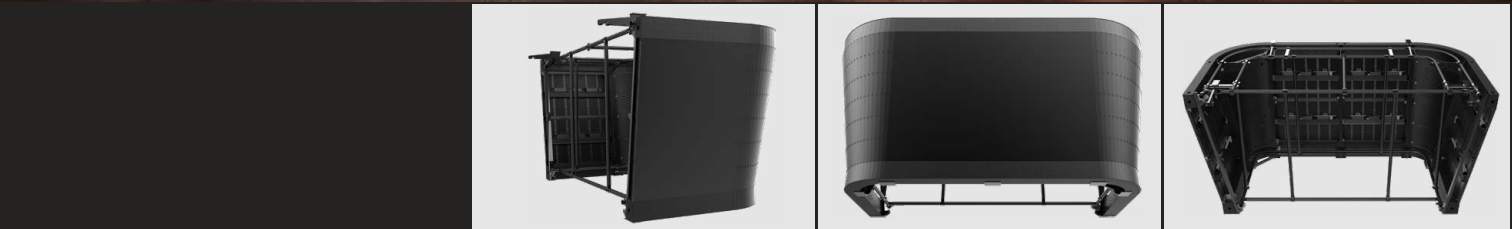
JCH SERIES

ARENA CENTRE SUSPENDED



CH - SPECIFICATION

Item	T4	T6
Pixel pitch (mm)	4	6
LED type	SMD	SMD
Pixel density (pixel/m ²)	62500	27777
Module dimension (W*H)	192×384 mm	192×384 mm
Module resolution (W*H)	48×96 pixels	32×64 pixels
Cabinet dimension (W*H*D)	1152×768×60 mm	1152×768×60 mm
Cabinet resolution (W*H)	288×192 pixels	192×128 pixels
Cabinet weight (Kg/m ²)	18.5 kg/m ²	18.5 kg/m ²
Access	Front/ rear access	Front/ rear access
Ingress protection	IP30	IP30
Brightness (nits/m ²)	1000 black/ 1500 black	1800 black/ 3000 panda
Color temperature (k)	6500 adjustable	6500 adjustable
Viewing angle	V140° H140°	V140° H140°
Max. power consumption (W/m ²)	480 W	480 W
Ave. power consumption (W/m ²)	150 W	150 W
Input voltage	AC 100-240V	AC 100-240V
Driving method (S)	1/16	1/8
Refresh rate (Hz)	1920~3840	1920~3840
Gray scale (Bit)	≥14 HDR available	≥14 HDR available
LED lifespan (Hrs)	100000	100000
Operation temperature (°C)	-20~50	-20~50
Storage temperature (°C)	-30~60	-30~60
Working humidity (RH)	15% - 95%	15% - 95%
Storage humidity (RH)	15% - 85%	15% - 85%



Energise fan experience

The JCH Series benefits from slim and lightweight cabinets, delivering exhilarating real-time broadcasting, replays, scores, close-ups, sponsor branding and advertising. We have many years of expertise engineering customised displays, and supporting architecture, to stretch the imagination and encourage creative content.

Features



Ultra light cabinet



Front / rear access



Smart module



Flexible in shape



Slim cabinet



Whisper-quiet operation



High refresh rate



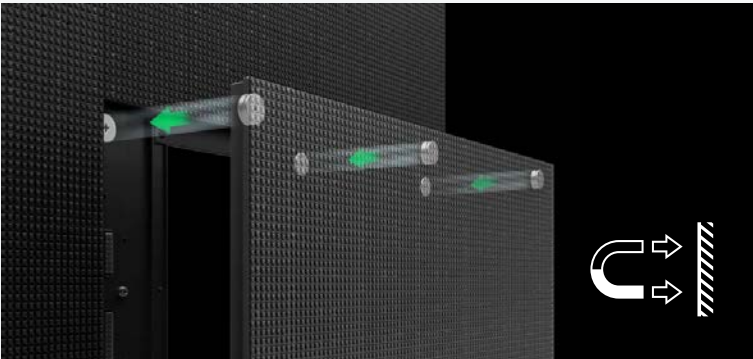
Seamless curve



Flexible architecture, lightweight cabinet

The depth of the larger cabinet frame is just 42.6mm, which simplifies the structure and facilitates efficient assembly.

The 1152x768mm cabinets allow for perfect alignment and with a very light 18.5kg/m² minimises load-bearing and maximises the cost efficiency of the installation.



Magnetically connected module

The individual 192x384mm LED modules utilise a magnetic and screw fixing design for accurate, quick and secure alignment, for the best visual performance.

The signal cables are concealed for increased stability and the intelligent cabinet design assists in simplifying the installation process.



Seamless alignment

Robust and precise cabinet architecture achieves alignment within 0.1mm, resulting in a seamless canvas for picture perfect image quality. Rabbet joints further assist accurate cabinet alignment and installation.





High refresh rate, better visual experience

The JCH Series has a high refresh rate of 3840Hz to eliminate the 'moiré effect' when filmed for live and repeat broadcasting. Picture perfect quality guaranteed to maximise the viewing enjoyment for the live and home audience.

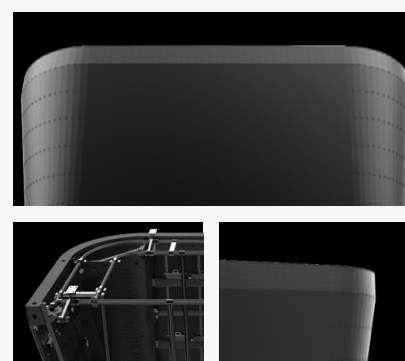


**Arena center hung
LED display**



Whisper-quiet operation

Our thermal management technology ensures that the heat generated escapes through the rear vents and the fanless design minimises operating noise to near silent.



Tailor-made display, infinite possibilities

The four sided centre suspended arena displays can be offered with seamless curved corners to enhance the design and audience viewing experience.





JASSTECH

JASSTECH Pty Ltd
PH: 1300 665 135
E: enquiries@jasstech.com.au
www.jasstech.com.au