



JASSTECH

The future is bright



SPORTS MAX

LED Flood Lighting System

Low Glare, Efficient Court Lighting

Court sports such as Tennis, Netball and Basketball require lighting that will deliver high uniformity on low masts whilst delivering low glare.

JASSTECH's SPORTS MAX is a leader in its class, because it delivers: market-leading and reliable lumens per Watt; superior uniformity; outstanding light quality; and remarkable visual comfort.

Utilising our super efficient high-flux light sources and thermal technology, the SPORTS MAX range delivers market leading performance that will deliver, even in Australia's harsh environment. Custom engineered optics are also one of our major breakthroughs in LED beam control. The SPORTS MAX will deliver incredible performance that meet and exceed the most challenging of lighting requirements.

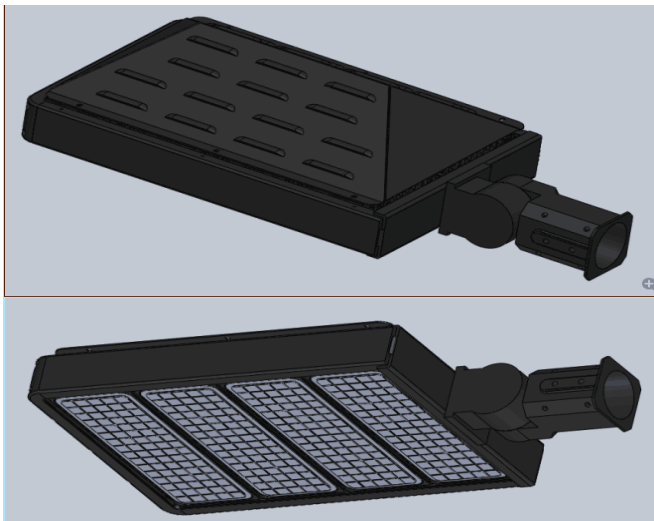
BENEFITS

- « Extremely slimline design
- « Very low windage area (EPA)
- « Various lumen packages from 75W-1000W
- « Easy direct replacement using the existing mast, wiring, and mounting arms
- « Dark sky friendly with zero upward light
- « Virtually no tilt, delivering ultimate control, and reduced glare
- « Industry leading optical performance for light spill control
- « Consistent high performance in the most demanding environments
- « Compatible with leading programmable lighting control systems, including the Sporte wireless system

INSTALL

SPORTS MAX is designed to be installed on existing lighting poles and infrastructure. It is, therefore, also ideal for new installs.

The efficiently designed SportsMax can be mounted using the various bracket and mounting options. This eliminates the expense for new poles, crossarms, demolition, engineering, and foundations.



DRIVER SYSTEM

CONTROL

The power control technology delivers constant light output, independent of input voltage variations and runs at an efficiency of >96% and a power factor of 0.99*.

FLEXIBILITY

The complete power gear system can be located up to 50m away from the luminaires, making it Ideal for remote mounting. This simplifies installation, lowers initial cost and enables easy access for maintenance and future upgrades.

Technical Specifications

Model	FML-075	FML-100	FML-150	FML-200	FML-300	FML-400	FML-600	FML-800	FML-1000
LED Max Power (W)	75	100	150	200	300	400	600	800	1000
Typical System Power (W)	82	110	160	220	320	440	640	880	1100
Typical Luminous Flux (lm)	12,800	17,800	22,500	35,800	52,100	71,800	105,000	143,500	179,400
Module Package Dimensions (mm)	326x128x113		381x259x113		381x369x113	381x465x113	681x368x113	681x463x113	689x567x113
Total Luminaire Mass (kg)	6		8.5		9.8	11.5	14.8	16.2	17.6
Correlated Colour Temperature (CCT)	~5500K (other options available)								
Colour Rendering Index (CRI)	>Ra80								
System Efficacy (LER)	>160 lm/W								
LED Junction Temp. (@ Ta=25°C)	≤80°C								
Driver Position	Remote or on-board								
Input Voltage Range	240V and 415V options available								
Power Factor	>0.90								
Electrical Class	Class I								
Flicker Rate	<2%@100% power								
Dimming Control Options	0-10V, PWM, DALI, Wireless								
Ambient Operating Temperature	-40°C to +45°C								
Module Package Material	Aluminium (low copper content), SS 316 fasteners								
Optical Cover	Polycarbonate								
Finish	Black or Grey powder coated (customized RAL colour available upon request) IP64								
Ingress Protection (IP)	Module Package=IP65/ Junction Box=IP66/ Driver=IP67								
IK (Impact) Rating	IK08								
Certifications	CE, CB, SAA, ETL, RCM								



CONTACT US

☎ 1300 665 135 | ✉ enquiries@jasstech.com.au

www.jasstech.com.au